

SEPTEMBER COUNSELING CORNER



A MESSAGE FROM MRS. BURKHALTER

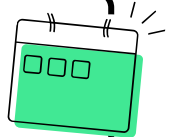
Hello everyone and welcome back to another school year! My name is Jennifer Burkhalter and I am thrilled to be your student's social emotional coach! Stay connected and informed with our "Counseling Corner" monthly newsletter! Each month, look for my newsletter to see what is happening at St. John. If you have any questions or concerns throughout the year, please contact me. I am in the office Mondays, Wednesdays, and Fridays. I am looking forward to another great year!

CHARACTER STRONG



- Character Strong is our social emotional curriculum for pre-k through 8th grade. Students receive weekly lessons regarding the character trait of the month.
- This month's character trait is respect. Character Strong defines respect as "seeing value in all things and people and treating them with care".

CAREER EXPLORATION



We are looking for individuals interested in speaking to our middle school students regarding their careers! We have several dates available. More information is available on our St. John XXIII website. If you are interested, please contact Mrs. Burkhalter at jburkhalter@stjohn23rd.school.

BAGS IN BACKPACKS

Did you know that through a partnership with Family Sharing of Ozaukee County, St. John offers a grab and go backpack full of food that students can take home over the weekend?

Please email Mrs. Burkhalter at jburkhalter@stjohn23rd.school if you would like to sign up.

CONTACT ME

1. jburkhalter@stjohn23rd.school